

AT A GLANCE

年度概覽

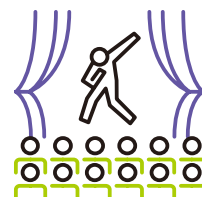
In 2019/20, the West Kowloon Cultural District Authority (WKCD) continued to enhance cooperation, cultivate appreciation and encourage wider participation in arts and culture through our programmes, venues and outreach. Owing to the dual impacts of social events and the COVID-19 pandemic, a substantial number of programmes and activities originally planned in the reporting year were rescheduled or cancelled.

在2019/20年度，西九文化區管理局(管理局)繼續透過不同的節目、場地及對外推廣，加強合作、培育觀眾，以及鼓勵大眾廣泛參與欣賞藝術和文化。因受到社會事件和2019冠狀病毒疫情的雙重影響，多個原本計劃在報告年度舉辦的節目和活動被逼改期或取消。

Performing arts projects and activities organised 舉辦的表演藝術項目和活動

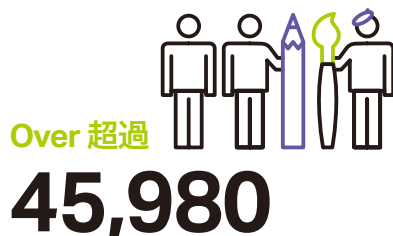
Over 超過

1,340



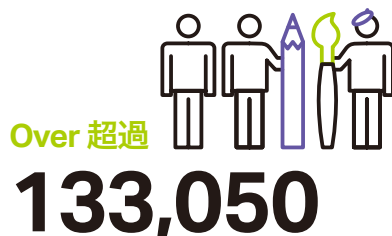
Freespace | 自由空間

Audience reached*
參與觀眾人次



Xiqu Centre | 戲曲中心

Audience reached*
參與觀眾人次



Art Park | 藝術公園

Event participants*
活動參與人次



Online Outreach | 網上推廣

Page views of
West Kowloon Cultural District's website
西九文化區網頁瀏覽次數

Over 超過

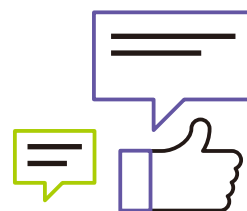
7,300,000



Followers of West Kowloon Cultural District's
Facebook pages
西九文化區各個Facebook
專頁累計追蹤者

Over 超過

115,800



AT A GLANCE
年度概覽

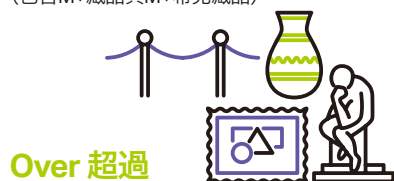
M+

Works in the M+ Collections (items)

(Including the M+ Collection and the M+ Sigg Collection)

M+ 藏品系列中的藏品 (件)

(包含M+藏品與M+希克藏品)



Over 超過

7,400

M+ Collection Archives (individual items)

M+ 檔案藏品 (件單獨物件)



Over 超過

46,600

Visitors attracted to the M+ Pavilion

M+ 展亭訪客人次



Over 超過

20,000

Hong Kong Palace Museum | 香港故宮文化博物館

Visitors attracted to Hong Kong Palace Museum's booth at Fine Art Asia 2019

典亞藝博2019香港故宮文化博物館預展訪客人次

Around 大約

5,000



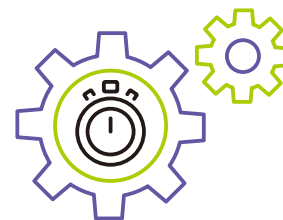
Project Delivery | 項目推展

Man-hours of construction work undertaken (from 2014 till the end of the reporting year)

建築工程累計小時 (以人工時計算)
(2014年至報告年度完結前)

Over 超過

34,500,000



* The number of audiences and event participants covers those who joined the programmes organised by WKCD and external hirers.

* 包括管理局和場地租用戶舉辦的節目的觀眾和活動參與人次。